

Table of Contents

Magnetic Grate-Square Shape Series	2
Magnetic Grate-Round Shape Series	4
Magnetic Drawer	6
1. N style: Normal Magnetic Drawer	6
2. E style: Easy-Cleaning Drawer Magnet	7
Plate Housing Magnet	9
Hump Magnet	10
1. Half-Hump Magnet	10
2. Hump Magnet	10
Magnetic Liquid Trap	12
1. N Style Magnetic Liquid Trap	12
2. Easy-Clean Magnetic Liquid Trap	13
3. Insulation Style Magnetic Liquid Trap	13
4. Magnetic Liquid With Clamp Connection	14

Magnetic Grate-Square Shape Series

Features:

1. Frame and tube material is 304 or 316L stainless steel, good corrosion resistance and no pollution.
2. Standard magnetic grates are assembled with stainless steel frame and 25mm diameter round bars.
3. The frame and magnetic bar surface can be fine polished and full welded to meet food grade or pharmacy application. Standard working temperature $\leq 80^{\circ}\text{C}$, if needed, max working temperature from 80°C to 350°C is also available.

Special design:

1. Easy-clean design: This design is more expedient to do cleaning. Just take out the magnetic core, the iron impurities will fall from the outer shell. As shown in Figure 01, 02.
2. Multiple layers design: The one in the picture is double layers. Of course, more layers, better filter effect. As shown in Figure 06.
3. Add baffle to direct the material onto or close the rods when it flows down. By this way, more contaminants will be attracted. Baffle can be either small rods or 90 degree angle. As shown in Figure 03, 05.
4. Adding handles aims for easy operator. Especially with big size which is too heavy to handle. Another advantage of this design is to avoid contaminants dropping down when touched by hand.



Figure 01



Figure 02



Figure 03



Figure 04



Figure 05

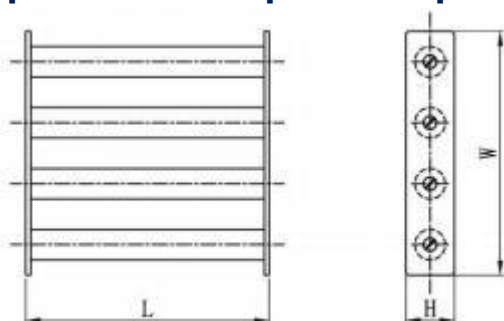


Figure 06

Application:

Magnetic Grate is installed or simply laid-inside of hoppers, housings, and bins to trap and hold ferrous fines, fragments, and small metal objects. Please be aware these grates are built for low-abrasion materials.

Specification-Square Shape Series



MODEL NO	Dimension (mm)			No of bars
	L	W	H	
XMKM10/10	100	100	40	2
XMKM15/15	150	150	40	3
XMKM20/20	200	200	40	4
XMKM25/25	250	250	40	5
XMKM30/30	300	300	40	6
XMKM35/35	350	350	40	7
XMKM40/40	400	400	40	8
XMKM45/45	450	450	40	9
XMKM50/50	500	500	40	10
XMKM20/10	200	100	40	2
XMKM30/10	300	100	40	2
XMKM30/20	300	200	40	4
XMKM40/10	400	100	40	2
XMKM40/20	400	200	40	4
XMKM40/30	400	300	40	6
XMKM50/10	500	100	40	2
XMKM50/20	500	200	40	4
XMKM50/30	500	300	40	6
XMKM50/40	500	400	40	8

Magnetic Grate-Round Shape Series

Features:

1. Frame and tube material is 304 or 316L stainless steel, good corrosion resistance and no pollution.
2. Standard magnetic grates are assembled with stainless steel frame and 25mm diameter round bars.
3. The frame and magnetic bar surface can be fine polished and full welded to meet food grade or pharmacy application. Standard working temperature $\leq 80^{\circ}\text{C}$, if needed, max working temperature from 80°C to 350°C is also available.

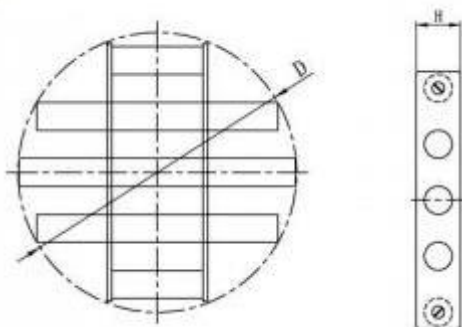
Special design:

2. Easy-clean design: This design is more expedient to do cleaning. Just take out the magnetic core, the iron impurities will fall from the outer shell. As shown in Figure 01, 02.
2. Multiple layers design: The one in the picture is double layers. Of course, more layers, better filter effect. As shown in Figure 06.
3. Add baffle to direct the material onto or close the rods when it flows down. By this way, more contaminants will be attracted. Baffle can be either small rods or 90 degree angle. As shown in Figure 03, 05.
4. Adding handles aims for easy operator. Especially with big size which is too heavy to handle. Another advantage of this design is to avoid contaminants dropping down when touched by hand.

Application:

Magnetic Grate is installed or simply laid-inside of hoppers, housings, and bins to trap and hold ferrous fines, fragments, and small metal objects. Please be aware these grates are built for low-abrasion materials.

Specification-Round shape series



MODEL NO	Dia(mm)	H(mm)	Bars	Weight(Kg)
XMKM-D100	100	40	2	0.9
XMKM-D150	150	40	3	1.5
XMKM-D200	200	40	4	2.5
XMKM-D250	250	40	5	3.7
XMKM-D300	300	40	6	5.5
XMKM-D350	350	40	7	7.5
XMKM-D400	400	40	8	10
XMKM-D450	450	40	9	12.3
XMKM-D500	500	40	10	15.5

Magnetic Drawer

Features:

1. Normal magnetic drawer(N Style) with max magnetic strength 12000Gs and Easy-cleaning magnetic drawer (E Style) with max 8000Gs are available.
2. Square chutes and round pipelines flange can be chosen to suit each customer s requirement for easy installation.
3. Standard working temperature $\leq 80^{\circ}\text{C}$, if needed, Max working temperature from 80°C to 350°C is also available.
4. One row, two rows or more rows magnetic grid can be produced according to customer requirement.
5. Housing and magnetic tube material are 304 or 316L stainless steel as customer request.

Applications:

Magnetic Drawers are designed for efficient fine iron and ferromagnetic contamination removing from a range of dry free flowing powdery, scrap, granule product such as sugar, grain, tea, etc. They are widely used in field of ceramics, chemicals, pharmacy, food, plastic, rubber dyestuff, mining, environmental protection, etc.

Note:

"d" stand for double rows

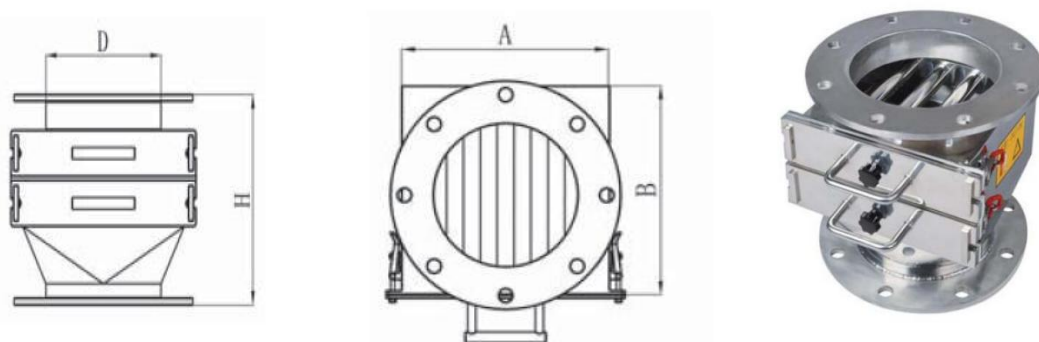
"s" stand for single rows

"N" stand for standard type

"R" stand for round flange top

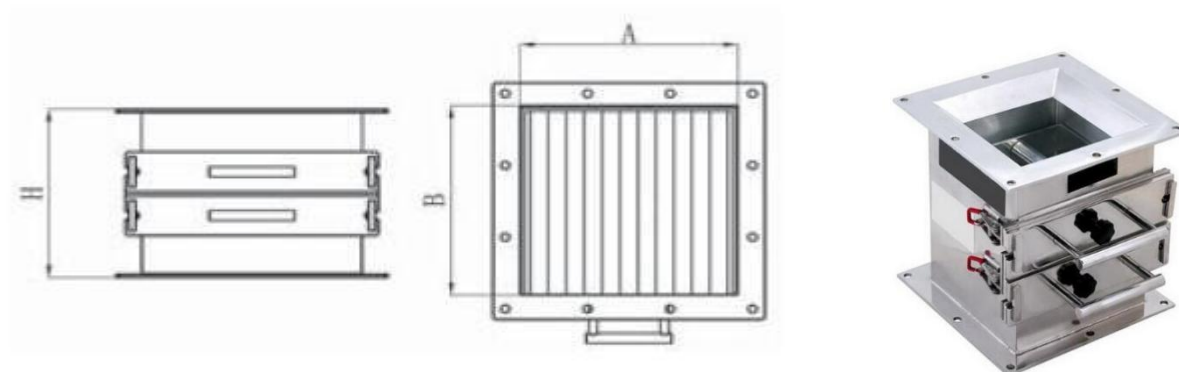
"S" stand for square flange top

1. N style: Normal Magnetic Drawer



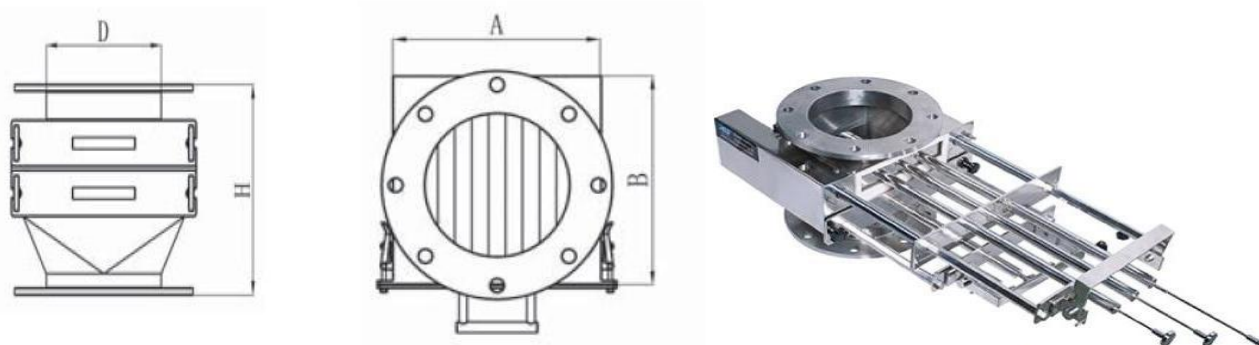
MODEL NO	Dimension(mm)				Weight (Kg)
	D	H	A	B	

KMd-NR-150	159	286	208	205	20
KMd-NR-200	219	286	258	255	28
KMd-NR-250	273	286	308	305	33
KMd-NR-300	325	286	358	355	43
KMs-NR-150	159	216	208	205	16
KMs-NR-200	219	216	258	255	20
KMs-NR-250	273	216	308	305	24
KMs-NR-300	325	216	358	355	31



MODEL NO	Dimension(mm)			Weight(Kg)
	D	A	B	
KMd-NS-2020	270	208	205	16.5
KMd-NS-2525	270	258	255	25.5
KMd-NS-3030	270	308	305	32.5
KMd-NS-3535	270	358	355	39
KMd-NS-4040	270	408	405	50
KMs-NS-2020	200	208	205	12.5
KMs-NS-2525	200	258	255	19.5
KMs-NS-3030	200	308	305	23.2
KMs-NS-3535	200	358	355	27
KMs-NS-4040	200	408	405	35.5

2. E style: Easy-Cleaning Drawer Magnet



MODEL NO	Dimension(mm)				Weight(Kg)
	D	H	A	B	
KMd-NR-150	159	286	208	205	20
KMd-NR-200	219	286	258	255	28
KMd-NR-250	273	286	308	305	33
KMd-NR-300	325	286	358	355	43
KMs-NR-150	159	216	208	205	16
KMs-NR-200	219	216	258	255	20
KMs-NR-250	273	216	308	305	24
KMs-NR-300	325	216	358	355	31

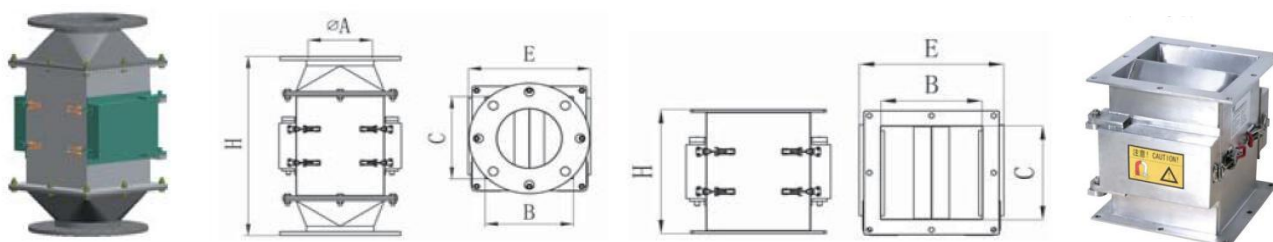
Plate Housing Magnet

Features:

1. Plate Magnets are hinged to the housing like doors, easy cleaning.
2. A wedge-shaped baffle at the top of the housing can prevents materials from bridging and choking, also can helps break up aggregated products and direct material flow over the units two powerful Plate Magnets.
3. With high power rare earth magnet, plate housing magnets ensure to grab all sizes of contamination firmly.
4. Inlet, outlet or other special can be custom made.

Applications:

Plate Housing Magnets are widely used in the filed of food, pharmacy, tobacco, chemical etc, to remove tramp is iron and ferrous fines from flow-resistant bulk materials that are easy block. The stainless steel housings can be easily installed to enclosed spouting line or directly mounted on processing equipment.



MODEL NO	Dimension(mm)					Weight (Kg)
	φA	B	C	E	H	
KMPH150	150	208	208	322	470	27
KMPH200	200	208	258	322	470	34
KMPH250	250	258	358	372	500	62
KMPH2020	/	208	208	322	300	17
KMPH2025	/	208	258	322	300	21
KMPH2525	/	258	258	372	300	27
KMPH2530	/	258	308	372	300	32
KMPH2535	/	258	358	372	300	37
KMPH2540	/	258	408	372	300	42
KMPH2545	/	258	458	372	300	47
KMPH2550	/	258	508	372	300	53
KMPH2555	/	258	558	372	300	58
KMPH2560	/	258	608	372	300	63

Hump Magnet

Features:

1. One separation unit from plate magnet.
2. Magnetic plate can be made from rare earth magnet or ferrite as customer's request, Housing material can be 304 or 316 stainless steel.
3. The angle shape directs the material flow into the magnetic field and prevent building up and bridging, and also break up clumps of product to improve efficiency of separator.
4. Simple structure, easy cleaning and assembling.
5. Inlet, outlet or other special requirement can be custom made.

Applications:

Hump Magnets are used to remove large pieces of tramp iron as well as ferrous fragments from gravity-flow materials or material flow activated by wind in enclosed flow lines before they reach storage bins or processing equipment. They can be mounted in spouting lines or on the processing machines.

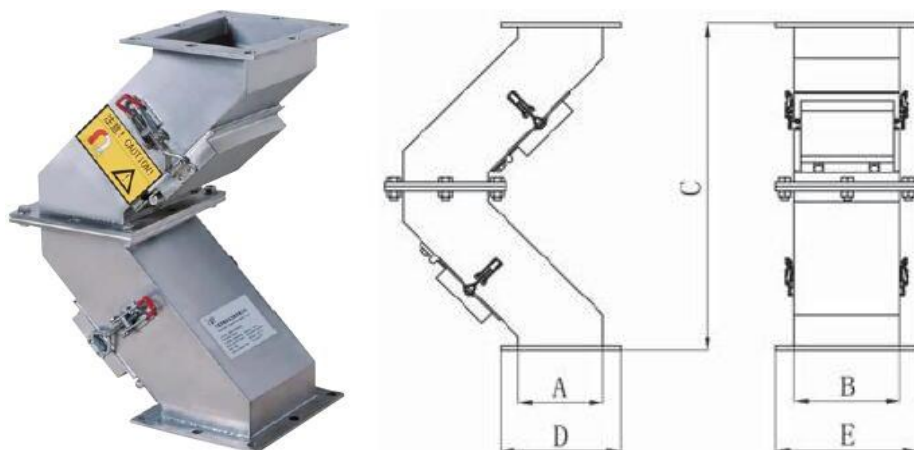
1. Half-Hump Magnet

This kind of Hump Magnet are developed for height restriction situation where full Hump Magnets can not be used.



2. Hump Magnet

There are many standard models of Hump Magnets made from ceramic magnets or rare earth magnet for customer choice.



Ferrite Hump Magnet Series

MODEL NO	Dimension(mm)					Weight(Kg)
	A	B	C	D	E	
KMFHM-120	120	150	470	170	200	15
KMFHM-150	150	178	750	250	220	37
KMFHM-200	200	178	750	300	220	49
KMFHM-250	250	178	750	350	220	61
KMFHM-300	300	178	750	400	220	73
KMFHM-350	350	200	1110	450	300	141
KMFHM-400	400	200	1110	500	300	161
KMFHM-450	450	200	1110	550	300	181
KMFHM-500	500	200	1110	600	300	201

NdFeB Hump Magnet Series

MODEL NO	Dimension(mm)					Weight(Kg)
	B	A	C	E	D	
KMNHM-120	150	120	470	170	200	14
KMNHM-150	178	150	750	250	220	33
KMNHM-200	178	200	750	300	220	44
KMNHM-250	178	250	750	350	220	55
KMNHM-300	178	300	750	400	220	66
KMNHM-350	200	350	1110	450	300	128
KMNHM-400	200	400	1110	500	300	146
KMNHM-450	200	450	1110	550	300	164
KMNHM-500	200	500	1110	600	300	182

Magnetic Liquid Trap

Magnetic Liquid Traps or Magnetic Liquid Filters are ferrous contamination from liquid with different viscosity level. They preserve product purity by removing small contaminants, provide magnetic protection for liquid lines and processing equipments.

Features:

1. Many different styles are available for different materials.
2. The max magnetic strength can reach 12 000GS for N style, 8000Gs for E style.
3. Standard working temperature=80℃, max working temperature can be chosen from 80℃ to 350℃ as the same with magnetic bars if needed.
4. Connection can be through ferrule, bolt plate, flange or uneven head, etc
5. Stainless steel 304 or 316L is available for shell material.
6. Properly designed magnetic configuration ensures maximum magnetic effect without impeding liquid flow.
7. Pressure design or other special requirement can be custom made.

1. N Style Magnetic Liquid Trap

Magnetic Strength: Up to the highest 12,000GS (1.2T)



MODEL NO	Dimension(mm)				No. of rods	Weight(Kg)
	φA	φB	C	D		
KMFL150/25	159	32	167	300	5	12
KMFL150/32	159	38	167	300	5	17

KMFL150/40	159	45	167	300	5	18
KMFL150/50	159	57	167	300	5	21
KMFL150/65	159	76	167	300	5	23
KMFL200/50	200	57	206	350	7	27
KMFL200/65	200	76	206	350	7	29
KMFL200/80	200	89	206	350	7	30
KMFL200/100	200	108	228	400	7	33
KMFL250/80	250	89	250	400	9	40
KMFL250/100	250	108	250	400	9	42
KMFL250/125	250	138	250	400	9	44
KMFL150/150	250	159	300	450	9	50
KMFL300/125	300	138	300	450	9	58
KMFL300/150	300	159	300	450	9	62
KMFL300/200	300	219	346	500	9	72

2. Easy-Clean Magnetic Liquid Trap

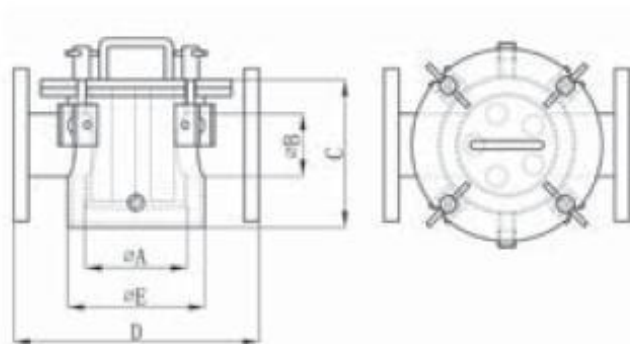
Magnetic strength: The highest is 8000GS (0.8T)



Specification: Size same as N style.

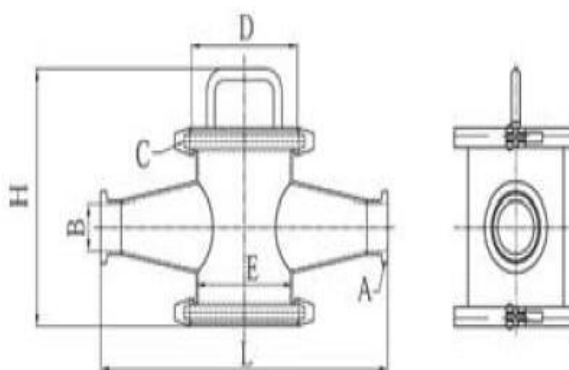
3. Insulation Style Magnetic Liquid Trap

Insulation Style Liquid Traps or Filters have a jacket filled with hot water or oil that keep liquid warm enough when it pass through the traps. Ideal choice for chocolate, syrups, jams and sauces to removing ferrous contamination.



MODEL NO	Dimension(mm)					No. of rods	Weight(Kg)
	φA	φE	φB	C	D		
KMFLD125/25	125	168	32	185	300	5	21
KMFLD125/32	125	168	38	185	300	5	22
KMFLD125/40	125	168	45	185	300	5	23
KMFLD125/50	125	168	57	185	300	5	24
KMFLD125/65	125	168	76	185	300	5	25
KMFLD160/50	160	219	57	220	360	7	32.5
KMFLD160/65	160	219	76	220	360	7	34
KMFLD160/80	160	219	89	220	360	7	36
KMFLD160/100	160	219	108	220	360	7	37.5

4. Magnetic Liquid With Clamp Connection



MODEL NO	Dimension(mm)							No. of rods
	A	B	C	D	E	L	H	
KM-S15-25	1.5S	35.7	4.5S	130	114	330	240	5
KM-S20-25	2S	47.8	4.5S	130	114	330	240	5
KM-S25-25	2.5S	59.5	5.5S	155	140	420	260	7
KM-S30-25	3S	72.3	5.5S	155	140	420	260	7
KM-S35-25	3.5S	85.1	5.5S	155	140	420	260	7